

*Comet*

**KILLIAN**  
Technik für den Caravan-Profil



# *Main catalog*

**Made in Germany**

# Wide neck canister **DIN 96**

13 / 16 / 19 litre with a built-in handle



19 litre



13 litre



16 litre

## Standard wide neck canister

with built-in handle,  
screw cap DIN 96,  
3/4" thread, unopend



Article code	Capacity	Dimensions
8001.82.10_13	13 litre	280/170/355
8001.82.10_16	16 litre	280/170/415
8001.82.10_19	19 litre	280/170/475

## Universal wide neck canister

with built-in handle,  
push-in cap, 3/4" thread  
closed with stopper



Article code	Capacity	Dimensions
8002.82.20_13	13 litre	280/170/355
8002.82.20_16	16 litre	280/170/415
8002.82.20_19	19 litre	280/170/475

## Super wide neck canister

with built-in handle,  
screw cap DIN 96,  
3/4" thread, with outlet valve



Article code	Capacity	Dimensions
8003.82.10_13	13 litre	280/170/355
8003.82.10_16	16 litre	280/170/415
8003.82.10_19	19 litre	280/170/475



with cap store

## 10 litre with built-in handle and cap store

so that the cap will not lost while fetching water.

### Standard wide neck canister 10 litre

with built-in handle, screw cap DIN 96, 3/4" thread, unopend and cap store



Article code	Capacity	Dimensions
8011.82.10_10	10 litre	270/140/350

# Wide neck canister **DIN 96**

20 / 25 / 30 litre with a built-in handle, stackable

30 litre



20 litre



25 litre



## Standard wide neck canister

with built-in handle,  
screw cap DIN 96,  
3/4" thread, unopend



Article code	Capacity	Dimensions
8001.82.10_20	20 litre	290/255/390
8001.82.10_25	25 litre	290/255/465
8001.82.10_30	30 litre	290/255/540

## Universal wide neck canister

with built-in handle,  
push-in cap, 3/4" thread  
closed with stopper



Article code	Capacity	Dimensions
8002.82.20_20	20 litre	290/255/390
8002.82.20_25	25 litre	290/255/465
8002.82.20_30	30 litre	290/255/540

## Super wide neck canister

with built-in handle,  
screw cap DIN 96,  
3/4" thread, with outlet valve



Article code	Capacity	Dimensions
8003.82.10_20	20 litre	290/255/390
8003.82.10_25	25 litre	290/255/465
8003.82.10_30	30 litre	290/255/540

## Universal wide neck canister 10 litre

with built-in handle, screw cap,  
3/4" tread closed with stopper,  
with cap store



Article code	Capacity	Dimensions
8012.82.20_10	10 litre	270/140/350

## Super wide neck canister 10 litre

with built-in handle, screw cap  
DIN 96, 3/4" thread, with  
outlet valve and cap store



Article code	Capacity	Dimensions
8013.82.10_10	10 litre	270/140/350



# Space-saving canister **DIN 96**

Extremely low profile!



without outlet valve



## Space-saving wide neck canister DIN 96

with built-in handle,  
screw cap DIN 96 and  $\frac{3}{4}$ " screw cap.



### without outlet valve

Article code	Capacity	Dimensions
8001.82.10_12	12 litre	425/125/260

### with outlet valve

Article code	Capacity	Dimensions
8003.82.10_12	12 litre	445/125/260

with outlet valve



Fits in every storage  
box due the  
extremely low profile.

# Aqua-Case wide neck canister **DIN 96**

13 litre – the ideal canister for travel

with cap store



Aqua-Case with screw cap DIN 96

Article code 8011.82.10\_13

with cap store



with sturdy strap

Aqua-Case with screw cap DIN 96 and 1 m sturdy strap

Article code 8011.82.11\_13

With cap store, so the cap will not be lost while fetching water.

With recess in the middle of the canister. So you can easily attach the canister in the vehicle.

Dimensions: 400/120/360 mm.



Sturdy strap 1 m with fastening

Article code 8931.05.00

# Multi wide neck canister **DIN 96 and 51**



Our new Multi wide neck canister DIN 96 and DIN 51 permits with a capacity of 15 or 20 liters by its current compact design new applications with low headroom in the car and still holds enough water for normal daily requirement. Equally practical and functional: If you use the canister without submersible pump, you can put the filled canister simply on its narrow side (which is good to stand still provided with two extra parking spaces) and remove the water from the vented tap. Filling and cleaning due to the large tank opening DIN 96 is accomplished as usual simple and fast.

**Multi wide neck canister DIN 96 und 51 - 15 litre**

screw cap DIN 96 and Outlet valve DIN 51 - 20 mm

Article code	Capacity	Dimensions
8043.82.10_15	15 litre	390 x 250 x 250

**Multi wide neck canister DIN 96 und 51 - 20 litre**

screw cap DIN 96 and outlet valve DIN 51 - 20 mm

Article code	Capacity	Dimensions
8043.82.10_20	20 litre	390 x 250 x 320

# Hinged handle jerrycan

10 / 14 / 16 litre wide neck canister DIN 96 with bow-type hinged handle



10 litre



16 litre



14 litre

## Standard wide neck canister

with hinged handle, screw cap DIN 96, 3/4" thread, unopened



Article code	Capacity	Dimensions
8021.82.10_10	10 litre	280/170/280
8021.82.10_14	14 litre	280/170/400
8021.82.10_16	16 litre	320/170/375

## Universal wide neck canister

with hinged handle, push-in cap, 3/4" thread, closed with stopper



Article code	Capacity	Dimensions
8022.82.20_10	10 litre	280/170/280
8022.82.20_14	14 litre	280/170/400
8022.82.20_16	16 litre	320/170/375

## Super wide neck canister

with hinged handle, screw cap DIN 96 and outlet valve.



Article code	Capacity	Dimensions
8023.82.10_10	10 litre	280/170/280
8023.82.10_14	14 litre	280/170/400
8023.82.10_16	16 litre	320/170/375

13 / 15 litre wide neck canister with bow-type hinged handle



13 litre



15 litre

## Special wide neck canister

with hinged handle, push-in cap, with cutout for submersible pump cable and tube in the canister neck



Article code	Capacity	Dimensions
8301.82.20_13	13 litre	280/155/380
8301.82.20_15	15 litre	320/170/355

# Filler Professionals

## Filler canister with rotatable handle, pourer and vent valve

Filler can

10 litre



Aquafill

16 litre



▲ Pourer can be screwed to the cap from both sides



▲ vent valve: Put assembly tip at the side of the O-ring. Press tip through canister wall. Valve gets stuck.

### Filler can 10 litre

2 handles make it easier to fill water into your fresh water tank. The pourer is equipped with a vent passage, so that the water can easily flow out of the can. Large fill hole.

Dimensions: 530 x 190 x 350 mm

Article code 8450.06.00\_10



### Aquafill 16 litre

With this filler canister filling your fresh water tank is no longer a problem. With the horizontal, rotatable handle its very easy to rank the canister. The vent valve provides for easy pouring. The pourer can be stowed in the canister after use. Due to the large neck (DIN 96), the canister can be easily cleaned by hand.

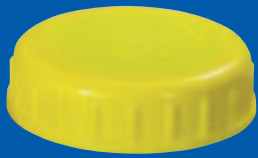
Dimensions: 280 x 170 x 415 mm

Article code 8031.01.12\_16

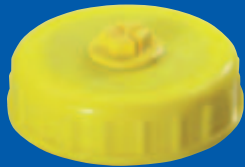


▲ Push-in cap

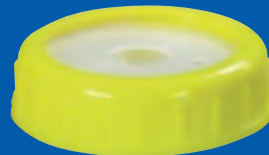
# Accessories for wide neck canister **DIN 96**



Screw cap DIN 96 with seal  
Article code 8070.82.00



Screw cap DIN 96 with 3/4" thread closed with stopper  
Article code 8071.82.00



Screw ring DIN 96 with dust cap 2-hole for cable and hose from submersible pump  
Article code 8075.82.01  
Screw ring DIN 96 dust cap DIN 96  
Article code 8076.06.00



Screw cap DIN 96 with quick release coupling for wide neck canister or water taxi. Attach a 1/2" hose to the quick coupling. Couple it to the cap and you can start filling.  
Article code 8071.82.10



Screw cap DIN 96 with holding band protects the cap against loss. At the same time the cap is a key for the stopper, if you remove the holding band.  
Article code 8071.82.20



Screw cap DIN 96 with vented outlet valve Ø 20 mm  
Article code 8072.82.00



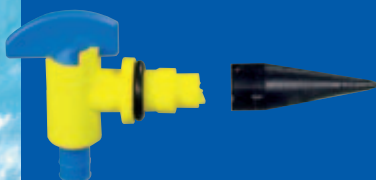
Screw cap DIN 96 with vented outlet valve Ø 20 mm and flexible hose 300 mm with barbed hosetail 20 mm (Hose length also on customer requirements)  
Article code 8072.82.10



Push-in cap for canister DIN 96  
Article code 8077.82.00



Push-in cap for canister 26314 + 26316  
Article code 8375.82.00



Vent valve with assembly tip Suitable for every canister. Easy mounting. Press assembly tip through canister wall. Tip falls inside. Valve gets stuck.  
Article code 8902.82.00



Key for all screw caps DIN 96  
Article code 8074.01.00



Wastewater cap with screw ring DIN 96 incl. 100 cm wastewater hose with connection piece inner-Ø 28 mm (hose length also on customer requirements)  
Article code 8090.01.00





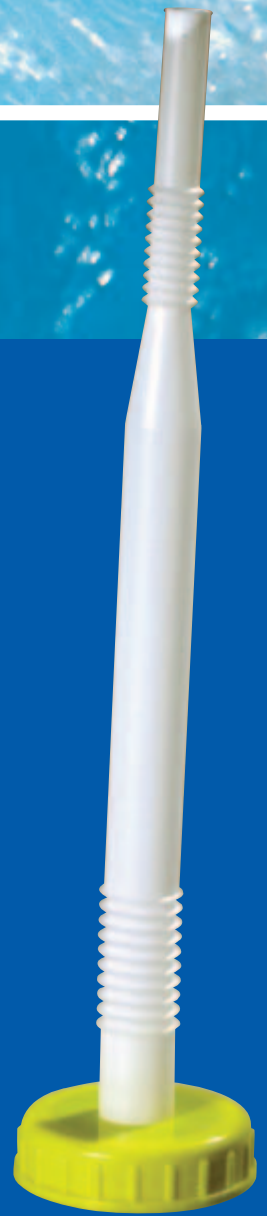
**Pourer MINI DIN 96 with closing cap**  
 screwed into cap DIN 96  
 Front diam.: 22 mm,  
 Length: 145 mm.  
 Screwable from both sides of the cap  
**Article code 8073.82.00**



**Pourer MAXI DIN 96 with closing cap and vent valve**  
 screwed into cap DIN 96  
 Front diam.: 34 mm,  
 Length: 200 mm.  
 Screwable from both sides of the cap  
**Article code 8073.82.11**



**Pourer MAXI DIN 96 with closing cap**  
 screwed into cap DIN 96  
 Front diam.: 34 mm,  
 Length: 200 mm.  
 Screwable from both sides of the cap  
**Article code 8073.82.01**



**Pourer MULTI DIN 96**  
 screwed into cap DIN 96  
 Front diam.: 20 mm,  
 Length: 500 mm, can be bent 2 times  
**Article code 8073.82.02**



**Outlet valve 3/4" with outlet 10 mm**  
 with mounting nut 3/4"  
**Article code 8922.13.01**  
 without mounting nut  
**Article code 8922.13.00**



**Outlet valve 3/4" rotatable without venting** Ø 10 mm  
 with mounting nut 3/4"  
**Article code 8921.06.01**  
 without mounting nut  
**Article code 8921.06.00**



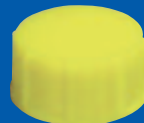
**Outlet valve 3/4" rotatable with venting** Ø 20 mm  
 with mounting nut 3/4"  
**Article code 8920.13.01**  
 without mounting nut  
**Article code 8920.13.00**



**PE-seal 3/4" for stopper**  
**Article code 8980.06.00**



**Stopper 3/4"**  
**Article code 8900.82.00**



**Screw cap 3/4" with seal**  
 for water taxi and space saver canister.  
**Article code 8901.82.00**



**Mounting nut 3/4"**  
**Article code C9.1007.05**

# Safari canister **DIN 51**

Drinking water canister 15 and 23 litre for camping, outdoor, trekking

15 litre

◀ Poured can be screwed from both sides to the closure.



23 litre



◀ rotatable handle

**Safari drinking water canister of robust PE for intensive use in camping, outdoor and trekking.**



Whether as filler canister for your fresh water tank, as means of transport for traveling, as water supply when camping or in the garden, the Safari canister can satisfy all demands.



## Safari canister 15 litre with rotatable handle

Dimensions: 350/170/390 (with handle)

With screw cap DIN 51	Article code 8211.53.10_15
With screw cap with pourer 200 mm	Article code 8211.53.12_15
With screw cap with outlet valve	Article code 8211.53.11_15

## Safari canister 23 litre with rotatable handle

Dimensions: 350/170/520 (with handle)

With screw cap DIN 51	Article code 8211.53.10_23
With screw cap with pourer 200 mm	Article code 8211.53.12_23
With screw cap with outlet valve	Article code 8211.53.11_23

## Accessories for Safari canister

screw cap DIN 51	Article code 8270.01.00
screw cap DIN 51 with outlet valve	Article code 8272.01.00
screw cap DIN 51 with pourer 200 mm	Article code 8273.06.01

# Combi canister

5 / 10 / 15 / 20 / 35 litre drinking water and liquid food



5 litre



without valve

10 litre



15 litre



- with outlet valve (except 28005)
- with flexible pourer (except 28035)
- food safe
- robust and insensitive against impact
- closing cap secured against loss
- Pourer is kept in the canister (to prevent dirt and loss)
- Pourer with integrated vent
- outlet valve with integrated vent
- high stability due to large footprint
- easy to carry due to the massive handle
- optimized design and inherently stable.
- Material: HDPE
- Length of pourer: 195 mm
- Diameter of pourer: 20 mm

## Combi canister

Article code	Capacity	Footprint LxW mm	Height mm	Weight g	PU pallet	Speciality
8401.58.12_05	5 litre	330 x 150	251	450	160	w/o outlet valve!
8403.58.12_10	10 litre	348 x 174	319	650	100	-
8403.58.12_15	15 litre	352 x 175	418	750	80	-
8403.58.12_20	20 litre	416 x 203	408	940	60	-
8403.58.10_35	35 litre	415 x 248	537	1260	40	w/o pourer!

20 litre



35 litre

without pourer



## Accessories for Combi canister

8472.58.00	Outlet valve
8473.58.00	Pourer

# Water canister **DIN 61**

20 / 25 / 30 litre

20 litre



25 litre



30 litre



▼ mounted vent valve 8902.82.00



## Canister with screw cap DIN 61

Article code	Capacity	Dimensions
8101.82.10_20	20 litre	290/255/390
8101.82.10_25	25 litre	290/255/465
8101.82.10_30	30 litre	380/280/400



## Canister with outlet valve DIN 61

Article code	Capacity	Dimensions
8101.06.11_20	20 litre	290/255/390
8101.06.11_25	25 litre	290/255/465
8101.06.11_30	30 litre	380/280/400



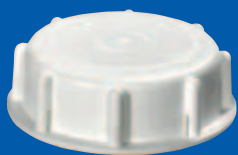
## Canister with pourer (200 mm) DIN 61

Article code	Capacity	Dimensions
8101.06.12_20	20 litre	290/255/390
8101.06.12_25	25 litre	290/255/465
8101.06.12_30	30 litre	380/280/400



◀ Pourer 8173.06.01 can be screwed from both sides into the cap.

# Accessories for canister **DIN 61**



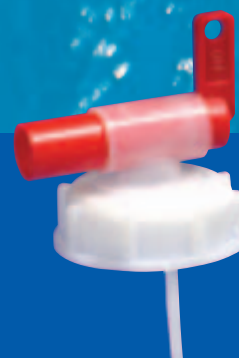
Screw cap DIN 61 with seal  
Article code 8170.06.00



Screw cap DIN 61 with 3/4" thread closed with stopper  
Article code 8171.06.00



Screw cap DIN 61 with quick release coupling. Attach the 1/2" hose to the quick coupling. Couple it to the cap and you can start filling.  
Article code 8170.06.10



Screw cap DIN 61 with vented outlet valve Ø 20 mm  
Article code 8172.06.00



Pourer MULTI DIN 61 screwed into cap DIN 61  
Front diam.: 20 mm, Length: 500 mm, can be bent 2 times  
Article code 8173.06.02



Pourer MINI DIN 61 with closing cap screwed into cap DIN 61  
Front diam: 22 mm, Length: 145 mm. Screwable from both sides of the cap  
Article code 8173.06.00



Pourer MAXI DIN 61 screwed into cap DIN 61  
Front diam: 34 mm, Length: 200 mm  
Article code 8173.06.01



Screw cap DIN 61 with vented outlet valve Ø 20 mm and flexible hose 300 mm with barbed hosetail 20 mm (Hose length also on customer requirements)  
Article code 8172.06.10



Wastewater cap with screw ring DIN 61 incl. 100 cm wastewater hose with connection piece inner-Ø 28 mm (Hose length also on customer requirements)  
Article code 8190.13.00

Wastewater cap DIN 61 incl. 30 cm wastewater hose with connection piece inner-Ø 28 mm  
Article code 8191.06.01

# Water canister **DIN 51**

5 and 10 litre

5 litre



10 litre



◀ mounted vent valve 8902.82.00

▲ Pourer 8273.06.01 can be screwed from both sides into the cap.

## Canister with screw cap DIN 51

Article code	Capacity	Dimensions	
8201.82.10_05	5 litre	185/165/235	
8201.82.10_10	10 litre	225/190/300	

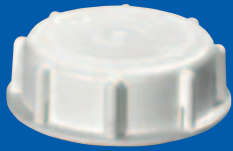
## Canister with outlet valve DIN 51

Article code	Capacity	Dimensions	
8201.06.11_05	5 litre	185/165/235	
8201.06.11_10	10 litre	225/190/300	

## Canister with pourer (200 mm) DIN 51

Article code	Capacity	Dimensions	
8201.06.12_05	5 litre	185/165/235	
8201.06.12_10	10 litre	225/190/300	

# Accessories for canister **DIN 51**



**Screw cap DIN 51 with seal**  
Article code 8270.82.00



**Screw cap DIN 51 with 3/4" thread closed with stopper**  
Article code 8271.06.00



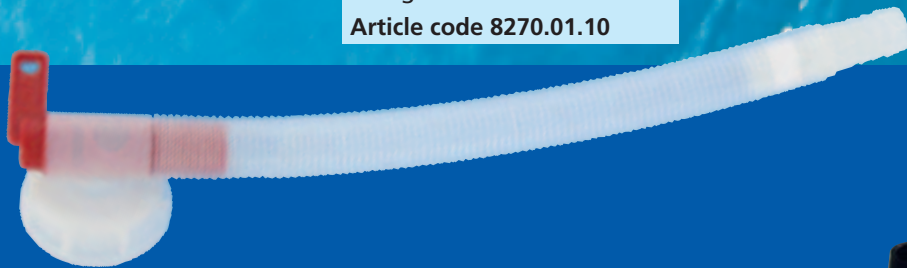
**Screw cap DIN 51 with quick release coupling.** Attach the 1/2" hose to the quick coupling. Couple it to the cap and you can start filling.  
Article code 8270.01.10



**Screw cap DIN 51 with vented outlet valve Ø 20 mm**  
Article code 8272.06.00



**Pourer MULTI DIN 51** screwed into cap DIN 51  
Front diam.: 20 mm,  
Length: 500 mm, can be bent 2 times  
Article code 8273.06.02



**Screw cap DIN 51 with vented outlet valve Ø 20 mm and flexible hose 300 mm with barbed hosetail 20 mm** (Hose length also on customer requirements)  
Article code 8272.06.10



**Pourer MINI DIN 51 with closing cap** screwed into cap DIN 51  
Front diam.: 22 mm,  
Length: 145 mm.  
Screwable from both sides of the cap.  
Article code 8273.01.00



**Pourer MAXI DIN 51** screwed into cap DIN 51  
Front diam.: 34 mm,  
Length: 200 mm  
Article code 8273.06.01



**Wastewater cap DIN 51** incl. 30 cm wastewater hose with connection piece inner-Ø 28 mm  
Article code 8291.01.00

# Folding jerrycan

5 / 10 / 20 litre, sales packed



## Folding jerrycan

with valve closure Ø 10 mm,  
neck-finish diameter 30 mm

Article code	Capacity	Dimensions (filled)
8311.06.11_05	5 litre	170/170/205
8311.06.11_10	10 litre	230/230/260
8311.06.11_20	20 litre	290/290/320 with 2 handles

## Accessories for folding jerrycan

8372.06.00	valve closure NW 30
8370.06.00	screw cap NW 30





# Water-Taxi 25 litre

The ideal companion for camping and leisure



- can be carried in each luggage compartment
- easy to move due the extendable carrying handle (can be extended up to 810 mm)
- easy to lift due the rotatable handle
- easy to fill due the filler neck  $\frac{3}{4}$ " external thread
- easy to operate with submersible pumps
- easy to empty due the large opening DIN 96
- capacity 25 litre
- dimensions: 500 x 335 x 240 mm

Fresh Water-Taxi green  
Article code 8600.63.10\_25

Water-Taxi grey suitable for use as fresh water  
or wastewater tank.  
Article code 8600.57.10\_25



# Wastewater-Taxi 25 litre

With wastewater hose inner diam. 25 mm, 1 m long



## The ideal companion for camping and leisure

- can be carried in each luggage compartment
- dimensions: 500 x 335 x 240 mm
- easy to move due the extendable carrying handle (can be extended up to 810 mm)
- easy to lift due the rotatable handle
- easy to fill due the filler neck 3/4" external thread
- easy to empty due the large opening DIN 96
- easy to close due the key for the screw cap DIN 96
- easy to connect to wastewater system due the hose connection piece.

„Waste water from mobile homes and caravans must be stored,“ so say our regulations. But where to put it?

The Wastewater-Taxi is your jack: Put the 25-liter tank under the mobile home. Screw on the cap and connect the hose to the wastewater system. If the tank is full, unscrew the wastewater cap. Put the cap from cap store onto the open neck. Fasten it with the key. Extend the carrying handle and went to the nearest recycling point. That's it.

Article code: 8690.57.12\_25

# Service Water-Taxi 12 / 24 volt

shower - filler - all on wheels



## It couldn't be easier!

You have everything at hand. Easy and convenient, you can fill the fresh water tank. Also ideal for showering. Go to the water point and fill up the Water-Taxi with max. 25 litres of water. Now you can take the water from everywhere where a 12 or 24-volt power outlet is available.

- A. Shower with the trigger shower head. Functions: suppressible, steady flow of water or pulser.
- B. Fill your water tank by the replaceable brass connector, if you have a water coupling included brass connector.
- C. Fill your water tank with the changeable plastic nuzzle that fits into even the smallest fuel tank filler neck.

The fix mounted service kit has everything on board. The built-in submersible pump has a power of 18 l/min. Pressure 1 bar. Consumption 40-45 W. The hose has a length of 2 m. The coiled wire can be extended up to about 4 m. The plug fits into every cigarette lighter.

**Service Water-Taxi universal 12V**

**Article code: 8610.01.10\_25**

**Service Water-Taxi universal 24 V**

**Article code: 8615.01.10\_25**



# Wastewater canister 19 litre

With wastewater hose inner diam. 25 mm, 1 m long



## Easy way to store wastewater ...

„Waste water from mobile homes and caravans must be stored,“ so say our regulations. But where to put it?

The wastewater canister is the easiest way to adhere the regulations. Put the canister under the mobile home. Screw on the cap and connect the hose to the wastewater system. If the tank is full, open the wastewater closure and close the neck with the screw cap DIN 61. Went to the nearest recycling point. That's it.

Dimensions: 475 x 280 x 170 mm

Universal wastewater canister 19 litre  
Article code: 8351.82.31\_19



Wastewater screw cap  
incl. 100 cm wastewater hose  
with connection piece inner-Ø 28 mm (Hose length also on  
customer requirements). Cut hose to the required length.  
Screw ring for easy attachment to the canister.

DIN 96 with 100 cm wastewater hose Article code: 8090.01.00  
DIN 61 with 100 cm wastewater hose Article code: 8190.13.00

# Wastewater canister 19 litre



## Standard wastewater canister 19 litre

with side screw cap DIN 96, key and screw cap DIN 61 on the top.  
Dimensions: 475 x 280 x 170 mm

Article code: 8351.82.10\_19



## Waste-Boy

19 litre wastewater tank with side screw cap DIN 96, key and screw cap DIN 61 on the top. With funnel which can be closed odour impermeable by a stopper.

Dimensions without funnel:  
475 x 280 x 170 mm

Article code:  
8351.82.14\_19



# Spiral mobile shower 12 / 24 volt

Fits in every canister with wide neck DIN 96

## Spiral mobile shower without canister

The coiled hose with shower head can be stretched up to 2 m and is in the coiled state only 25 cm long. The hose requires very little space.

The submersible pump has a power of 12l/min., pressure 0.6 bar, consumption 18-24 W. With coiled hose, which can be extended up to 4 m. It is provided with a 12 volt plug. The entire faucet can be used with any canister DIN 96. It comes in a handy plastic case.

### Easy to operate

- Put the pump in the canister – plug in the power outlet (cigarette lighter) – submersible pump is in operation.
- Put the lever of the shower head down. The water flows.
- Lever to vertical position of the shower – steady flow of water.

Spiral mobile shower 12 V  
Article code 8623.01.00

Spiral mobile shower 24 V  
Article code 8633.06.05\_00

### Attention:

Motor of the pump is running when the plug is inserted into the socket. Unplug the pump immediately after use. Prevent the pump from running dry. Protect the system from frost.



# Mobile shower 12/24 volt

Ideal for camping, leisure and business!

- Mobile shower with submersible pump. (for technical datas see list below)
- Consumption 18 - 24 W (SOLO)  
35 - 45 W (DUO)
- With coiled cord (about 4m) and plug.
- With shower head, suppressible, steady flow of water or pulser. With 2 m hose which is housed in the 20 l wide neck canister and can be pulled out easily.
- Dimensions of the 20 l canister: L/B/H 290/255/390 mm.

## Easy to operate

- Plug in the power outlet (cigarette lighter) – submersible pump is in operation.
- Pull hose out of canister. Put the lever of the shower head down. The water flows.
- Lever to vertical position of the shower – steady flow of water.

### Attention:

Motor of the pump is running when the plug is inserted into the socket. Unplug the pump immediately after use. Prevent the pump from running dry. Only use the mobile shower when it is water filled.

Protect the system from frost.  
Prevent canister against tip over.



### Mobile shower 12 volt

Article code 8620.06.20_20	SOLO	12 V with 20 l canister, 12 l/min; 0,6 bar
Article code 8620.01.00	SOLO	12 V w/o canister, in plastic case, 12 l/min; 0,6 bar
Article code 8621.06.20_20	DUO	12 V with 20 l canister, 20 l/min; 1,0 bar

### Mobile shower 24 volt

Article code 8630.06.20_20	SOLO	24 V with 20 l canister, 12 l/min; 0,6 bar
Article code 8630.05.00	SOLO	24 V w/o canister, in plastic case, 12 l/min; 0,6 bar
Article code 8631.06.20_20	DUO	24 V with 20 l canister, 20 l/min; 1,0 bar

# Portable shower 12 / 24 volt

Smart: Always and everywhere



## Portable shower 12 Volt

- with submersible pump 12 l/min., pressure 0.6 bar, consumption 18-24 W
- shower head, suppressible, steady flow of water or pulser.
- 2 m shower hose
- Coiled cable about 4 m and 12 volt plug.
- 20 l folding jerry can 290 x 290 x 320 mm.

Packed in a handy plastic case.  
Dimensions: 320 x 280 x 119 mm.

Article code 8620.01.10\_20 12 volt  
Article code 8630.05.10\_20 24 volt





# Electric-Filler 12 volt

A true sprinter 25 l in 2 min



## Now it's easier

Don't do it longer that way. Our Electric-Filler prevents you from the useless effort to stem the canister and try to fill it while standing on shaky ground.

The example of the water taxi (works also with every other DIN 96 canister) shows the advantage: The Electric-Filler pumps 25 l water in round about 2 minutes. What do you want more? Our Electric-Filler of course!



Use with canister

Use with Water-Taxi



Filler kit to transfer water from water canister in a built-in fresh water tank. Pumps 25 l in approx. 2 minutes.

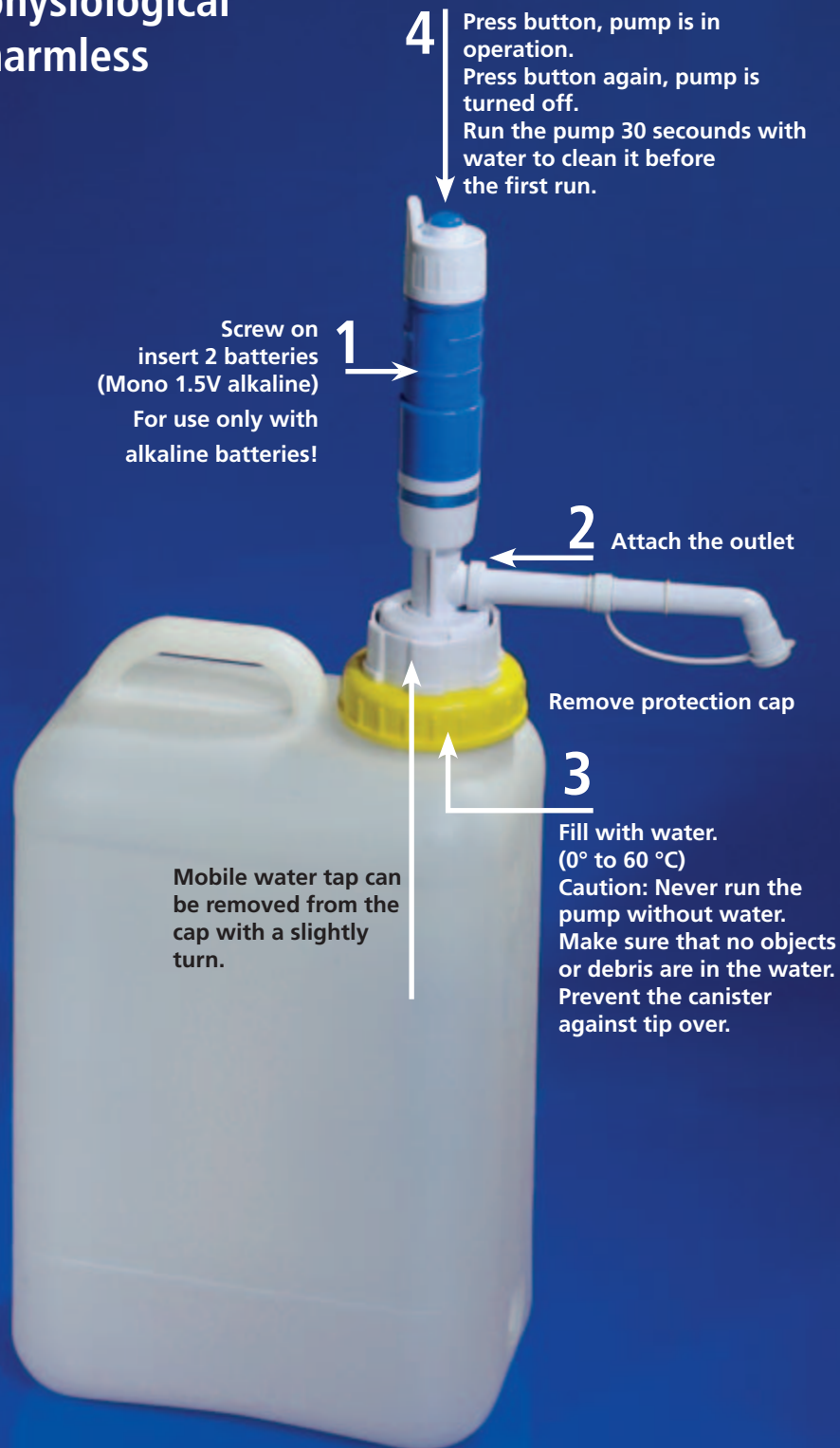
- submersible pump 20 l/min, pressure 1 bar, consumption 35 - 45 W
- about 4 m coiled cable with 12 volt plug
- Fabric hose 2.5 m long, 10 mm inner diameter, 3 mm wall thickness, including shut-off valve.
- Closure set for wide neck canister DIN 96 or original Water-Taxi.
- Packed in a handy plastic case.

Article code 8660.01.00

# Mobile water tap

with 19 l canister – for two mono 1.5 V alkaline batteries

physiological  
harmless



1 Screw on  
insert 2 batteries  
(Mono 1.5V alkaline)  
For use only with  
alkaline batteries!

4 Press button, pump is in  
operation.  
Press button again, pump is  
turned off.  
Run the pump 30 seconds with  
water to clean it before  
the first run.

2 Attach the outlet

Remove protection cap

3 Fill with water.  
(0° to 60 °C)  
Caution: Never run the  
pump without water.  
Make sure that no objects  
or debris are in the water.  
Prevent the canister  
against tip over.

Mobile water tap can  
be removed from the  
cap with a slightly  
turn.

Transports approx. 1000 l water  
with 2 alkaline batteries

Child's play is not an exaggeration. Our mobile water tap is very practical already while watching it. Switch on - the water flows, second press - the pump stops. This small waterworks helps you to wash your hands, your children or to clean your dog. These are only some samples of all the opportunities where you can use this water tap.

#### Caution:

- Protect pump from heat and frost.
- Remove the batteries if the pump is not in use for a long time..
- Never run the pump dry.
- Remove objects and dirt out of the water.
- Do not touch the bottom of the canister with the pump rod.
- Store it upright after the use.
- Protect against shock.
- Do not use it with lightly flammable liquids.
- If the pump does not work, check if the batteries are installed correctly and the cap with button is screwed correctly.
- Clean the pump after use with other liquids with water.
- At the lower end of the pump rod is the impeller. Do not disassembly. Do not shorten the pump rod.

Article code 8655.06.10\_19



# Water supply set 12 volt

Easily and quickly made by yourself: Complete with water tap



## Easy water supply with tap for canisters DIN 96

For battery operation – easy installation without soldering.

### Content:

- 1 battery box for 2 pieces of 6-volt batteries (without batteries) with plug and socket
- 1 submersible pump, flow rate 12 l/min., pressure 0.6 bar, CE-shielded, dry running seal, with plug and socket.
- 1 water tap NOVO with microswitch pressurized up to 1.5 bar with plug and socket.
- 2 m extension cable with plug and socket
- 2 m PVC hose, physiologically harmless and 2 hose clamps
- A screw ring and dust cap for canisters DIN 96

### Installation:

1. Install the water tap in the designated position and fix it with a nut (borehole 20 mm).
2. Attach PVC hose to the spout of the water tap and fix it with the hose clamp.

3. Attach the free end of the PVC hose to the nozzle of the submersible pump and fix it with the hose clamp.

### Wiring:

- a) Close plug of the battery box into the socket of water tap
- b) Close plug of the water tap into socket of the submersible pump
- c) Close plug of the submersible pump into socket of the battery box

### When using extension cable:

Plug and socket of cable into plug and socket of water tap.  
Other side of cable: Plug into socket of battery box, socket into the plug of submersible pump.  
Socket of submersible pump into plug of battery box

Delivered in a handy plastic case.

Article code 8651.13.00

# Shower supply set 12 volt

Complete with undertable faucet



## Easy shower supply set for wide neck canister DIN 96

For battery operation – easy installation without soldering.

### Content:

- 1 battery box for 2 pieces of 6-volt batteries (w/o batteries) including plug and socket
- 1 submersible pump, flow rate 20 l/min., pressure 1 bar CE-shielded, dry-running seal, including plug and socket.
- 1 undertable faucet with micro switch pressurized up to 1.5 bar with plug and socket.
- 1 Shower set: hand shower suppressible + regulatable shower/aerator, shower hose 3/8"-nut - 1.5 m - 3/8"-nut, table flange + wall mount
- 2 m extension cable with plug and socket
- 2 m PVC hose with 2 hose clamps
- 1 screw ring and dust cap for wide neck canister DIN 96

### Installation:

1. Install the faucet in the designated position and fix it with a nut. Bore hole 20 mm. Attach control button. Install table rosette in the designated position.
2. Attach PVC hose to the spout of the faucet and fix it with the hose clamp.

3. Attach the free end of the PVC hose to the pipe of the submersible pump and fix it with the hose clamp.
4. Attach shower hose with 3/8" nut from the top through the table flange. Screw into the thread of the faucet. Do not forget the seal.
5. Install wall bracket.

### Wiring:

- a) Close plug of battery box into socket of faucet
- b) Close plug of faucet into socket of the submersible pump
- c) Close plug of submersible pump into socket of the battery box

### When using extension the cable:

Plug and socket of cable into plug and socket of faucet. Other side of cable: Plug into socket of battery box, socket into plug of submersible pump. Socket of submersible pump into plug of battery box

Delivered in a handy plastic case.

Article code 8652.13.00

# Shower head for water plug

with 2 m coiled hose and shower head

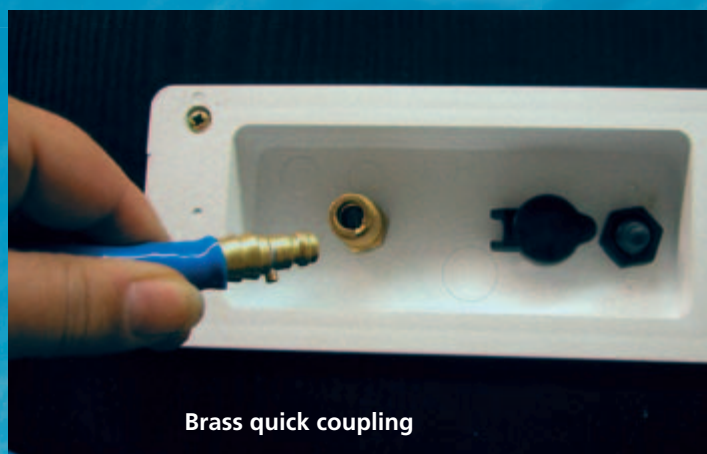


## Shower head for water plug

No more winding up the hose. The hose is not in the dirt. Easy to store. Simply open the case, plug in the hose, push the switch and the water flows ...

- with 2 m coiled hose and trigger shower
- With brass quick coupling,
- Shower head regulatable. Suppressible, steady flow of water or pulser
- With cone 1/2".
- Coiled hose extendable to 200 cm.
- Delivered in a handy plastic case.

Article code 8634.13.00



Brass quick coupling

# Accessories and hoses



## Canister connector 3/4"

With this connector set you can connect canisters with 3/4" thread. Either 2 canisters with 2 x 90° connectors or 3 canisters with additional T-connector.

### Inhalt:

- 2 connectors 90°, 3/4" thread, with seal
- 1 T-connector, 3/4" thread, with seal
- 4 hose clamps
- 2 x 25 cm transparent hose, inner diameter 25 mm

First, screw the connector into the 3/4" thread of the canister. Insert the hose ends into boiling water and slide it onto the hose connector.

**DO NOT FORGET:** Attach the hose clamps onto the hose before. Attach the hose clamps with a cordless screw driver on the heated hose **WARNING: Check the watertightness of your battery canister, before you use it.**

Packed in a plastic cover box.

Article code 8910.00.00



## Plug for 12 V showers

Article code V8.0420



## Power supply for the mobile use 12 V

for 2 pieces 6-volt block batteries (Delivery w/o batteries)

All devices can operate with the 12-volt plug regardless of all power sources. You can use the mobile shower approx. 2,5 hours with 1 set of batteries. A tent lamp 10 W can be used approx. 8 hours. No matter where you are, whether for camping, fishing, beach or in the garden shed.

Article code 3031.02.12



## Plastic combi shower head

with 3/8" angle. Combination aerator/shower. Adjustable: suppressible, steady flow of water or pulser.

Article code 2957.06.26 30° bend 3/8"

Article code 2957.06.27 straight 1/2"



## Trigger shower head 1/2"

adjustable: suppressible, steady flow of water or pulser, with seal.

Article code 2952.06.27



## Trigger shower head with angle 3/8"

adjustable: suppressible, steady flow of water or pulser, with seal.

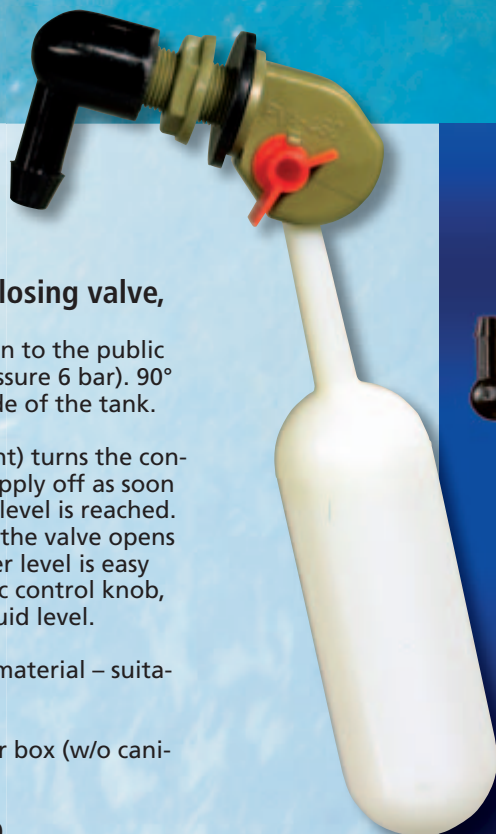
Article code 2952.06.26



## Nozzle set for waste water hose

Article code 8390.05.01

# Small float



## Floater controlled closing valve,

for the direct connection to the public water system (max. pressure 6 bar). 90° hose nozzle, 3/8" outside of the tank.

The valve (easy to mount) turns the connection to the water supply off as soon as the maximum water level is reached. If the water level sinks, the valve opens automatically. The water level is easy to adjust by an eccentric control knob, which is outside the liquid level.

Physiologically perfect material – suitable for drinking water.

Packed in a plastic cover box (w/o canister)

Article code: 8911.06.00



## Shower hose Sanflex

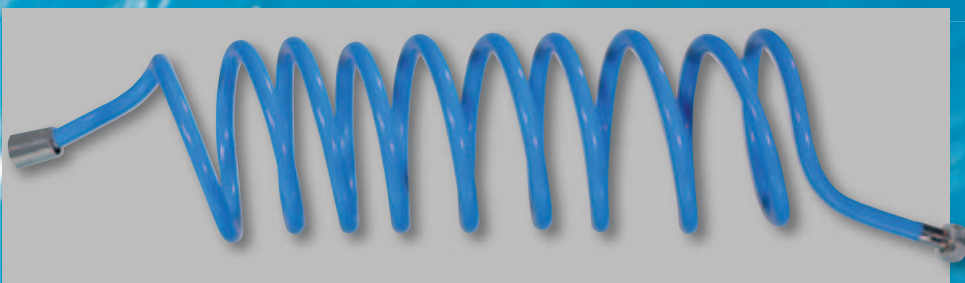
very flexible plastic tube with metal optics. Internal diameter 8 mm. Length: 1.50 m (Special lengths on request)

3/8" hex nut x 1/2" cone

Article code 3025.30.02

1/2" hex nut x 1/2" cone

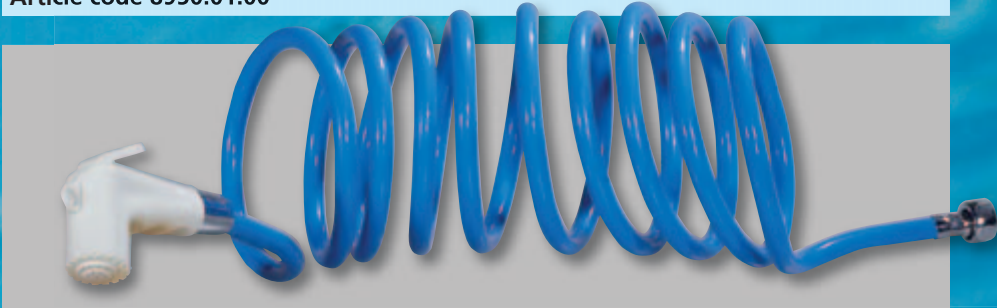
Article code 3025.30.47



## Coiled hose 200 cm

extendable, from 30 cm to 200 cm, 1/2" hex nut x cone 1/2"

Article code 8950.01.00



## Coiled hose 200 cm with shower head

extendable, from 30 cm to 200 cm, 1/2" hex nut x cone 1/2" with shower head

Article code 8951.01.00

# Wash-bowl *fashion*

## A new generation



### Wash-bowl mini round

For installation in a work surface  
Cutout dimension: diam. 230 mm  
Overall-diam.: 290 mm  
Depth: 120 mm

**white glossy polystyrene**  
Article code 8700.06.00



### Wash-bowl round

For installation in a work surface  
Cutout dimension: diam. 300 mm  
Overall-diam.: 360 mm  
Depth: 140 mm

**white glossy polystyrene**  
Article code 8701.06.00



### Wash-bowl mini oval

For installation in a work surface  
Cutout dimension: 380 x 200 mm  
Overall-dimension: 450 x 275 mm  
Depth: 150 mm

**white glossy polystyrene**  
Article code 8702.06.00



### Wash-bowl with soap dish

For installation in a work surface  
Cutout-dimension: 385 x 205 mm  
Overall-dimension: 450 x 350 mm  
Depth: 160 mm

**white glossy polystyrene**  
Article code 8704.06.00



### Wash-bowl oval

For installation in a work surface  
Cutout dimension: 420 x 260 mm  
Overall-dimension: 510 x 350 mm  
Depth: 150 mm

**white glossy polystyrene**  
Article code 8703.06.00



# Washbasin *fashion*

Made of high quality, impact-resistant polystyrene, deep-drawn



### Corner washbasin shelf right

Cutout-dimension: 425 x 265 mm  
 Overall-dimension: 840 x 375 mm  
 Bowl depth: 160 mm  
 Sowing depth: 170 mm  
**white glossy polystyrene**  
 Article code 8710.06.00



### Corner washbasin shelf left

Cutout-dimension: 425 x 265 mm  
 Overall-dimension: 840 x 375 mm  
 Bowl depth: 160 mm  
 Sowing depth: 170 mm  
**white glossy polystyrene**  
 Article code 8711.06.00



### Corner washbasin mini

Cutout-dimension: 340 x 165 mm  
 Lateral length: 345 x 345 mm  
 Bowl depth: 120 mm  
**white glossy polystyrene**  
 Article code 8705.06.00



### Corner washbasin maxi

Cutout-dimension: 430 x 270 mm  
 Lateral length: 420 x 420 mm  
 Bowl depth: 170 mm  
**white glossy polystyrene**  
 Article code 8706.06.00



### hand washbasin

Cutout-dimension: 385 x 205 mm  
 Overall-dimension: 450 x 435 mm  
 Bowl depth: 150 mm  
**white glossy polystyrene**  
 Article code 8707.06.00



### Space saving washbasin, 2-piece for small spaces

After use, the water is tilted back into the wall mount and flows without leaving any residual water.

Dimensions wall mount: 540/105/180 mm  
 Dimensions folded up: 540/175/315 mm  
 Dimensions unfolded: 540/315/180 mm

**white glossy polystyrene** Article code 8720.06.00

# Washbasins *fashion*

Made of high quality, impact-resistant polystyrene, deep-drawn



## Washbasin long

Cutout-dimension: 385 x 205 mm  
Overall-dimension: 900 x 325 mm  
Depth: 160 mm

**white glossy polystyrene**  
Article code 8712.06.00



## Washbasin long with round bowl

Cutout-diameter: 290 mm  
Overall-dimension: 900 x 340 mm  
Bowl depth: 140 mm  
Sowing depth: 270 mm

**white glossy polystyrene**  
Article code 8713.06.00



## Shower basin

Dimensions: 600/600/100 mm  
**white glossy polystyrene**

Article code 8740.06.00



## Trays

### Tray 450

Dimensions: 450/130/30 mm  
**white glossy**  
Article code 8751.06.00

### Tray 590

Dimensions: 590/130/30 mm  
**white glossy**  
Article code 8750.06.00

# Wash-Bowl *fashion*

A new generation of stainless steel wash-bowls



## Stainless steel wash-bowl with drain fittings

Cutout-diameter: 260 mm  
Overall-diameter: 295 mm  
Bowl depth: 120 mm  
Depth with drain fitting: 150 mm,  
drain fitting 52 mm, 90° angled for hose 25 mm,  
with stopper and stainless steel screen.

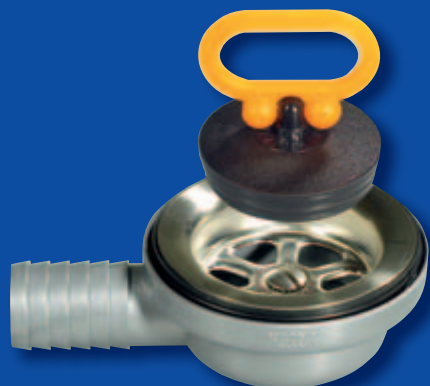
Article code 8730.20.00



## Stainless steel wash-bowl with drain fittings

Cutout-diameter: 300 mm  
Overall-diameter: 335 mm  
Bowl depth: 150 mm  
Depth with drain fitting: 180 mm  
drain fitting 52 mm, 90° angled for hose 25 mm,  
with stopper and stainless steel screen.

Article code 8731.20.00



## Drain fitting with stainless steel screen

for drains 52 mm, 90° angled for hoses 25 mm,  
with stopper and stainless steel screen.

Article code 8770.00.00



## Funnel with chain and stopper

Funnel can be closed odour-proof with a stopper.  
Inner diameter 195 mm. Colour red.

Article code 8930.13.00



## Angle funnel with strainer

Colour red

Article code 8491.13.00



## Funnel made of PE

Outlet straight, colour orange, oil, petrol and acid resistant, high overflow rim, straight outlet with vent rib, with handle latch and hanger, high flow rate, with brass strainer

Ø 200 mm

Capacity 2,9 litre, dimensions 220/240/210 mm,  
Outlet Ø 24,5 mm

Article code 8490.13.01

Ø 250 mm

Capacity 3,2 litre, dimensions 255/285/255 mm,  
Outlet Ø 27 mm

Article code 8490.13.02

Ø 160 mm

Capacity 1,2 litre, dimensions 205/200/160 mm, with handle,  
Outlet Ø 21,5 mm

Article code 8490.13.00



## immersion coil 12 V

Immersion coil for use in car, boat or camper. With 12 V plug,  
130 W, heating Coil approx. 11 cm long, diameter 4 cm.

Article code 8912.13.00



## Measuring cup

polypropylene, with scale, transparent, oil and acid resistant, food safe, shatter-proof and sturdy, ergonomic handle, stackable, safe pouring.

**0,5 litre**, scale 10 ml, dimensions 135/145/100 mm, **Article code 8430.00.00**

**1,0 litre**, scale 10 ml, dimensions 170/180/125 mm, **Article code 8430.00.01**

**2,0 litre**, scale 20 ml, dimensions 215/210/150 mm, **Article code 8430.00.02**

**3,0 litre**, scale 50 ml, dimensions 240/235/170 mm, **Article code 8430.00.03**

**5,0 litre**, scale 100 ml, dimensions 270/290/215 mm, **Article code 8430.00.05**



## Aerosol can round

**500 ml**      **Article code 8942.06.00**

**1000 ml**    **Article code 8942.06.01**



## Wide neck cans

Practical storage container made of PE, opening Ø 60 mm / can Ø 80, with screw cap.

	Article code screw cap green	Article code screw cap red
<b>1000 ml</b> , height 230 mm	<b>8941.63.04</b>	<b>8941.13.04</b>
<b>600 ml</b> , height 145 mm	<b>8941.63.03</b>	<b>8941.13.03</b>
<b>500 ml</b> , height 120 mm	<b>8941.63.02</b>	<b>8941.13.02</b>
<b>300 ml</b> , height 80 mm	<b>8941.63.01</b>	<b>8941.13.01</b>
<b>Set - 4 cans</b> , all sizes	<b>8941.63.00</b>	<b>8941.13.00</b>

## Fillers

with push-in cap, protective cap on the outlet and flexible pourer.

- Oil, acid and fuel resistant
- Ergonomic design
- Unbreakable and stable
- With scale
- Pourer is stored in the canister
- Material: polyethylene (PE)
- Temperature range:  
-10 °C / max. +110 °C

0,5 litre Dimensions: 160/70/190 mm

Article code 8431.06.00

2,0 litre Dimensions: 230/105/290 mm

Article code 8431.06.02

3,0 litre Dimensions: 265/130/335 mm

Article code 8431.06.03

5,0 litre Dimensions: 300/135/380 mm

Article code 8431.06.05



## Plastic case

Robust plastic case made of polypropylene with 2 snap-in clips.

Inner dimensions: 312x250x100 mm

Dimensions: 320x280x119 mm

Colour blue Article code V8.0350

Colour red Article code V8.0351

Colour black Article code V8.0352



## Dustbin 8 litre with lid

Dimensions: 230 x 200 x 300 mm, Colour green

w/o mounting bar

Article code V8.0910

with metal mounting bar

Article code 3792.63.00

## Dustbin 10 litre with lid

Dimensions: 250 x 230 x 300 mm, Colour green

w/o mounting bar

Article code V8.0911

with metal mounting bar

Article code 3793.63.00

# Fuel canisters

5 / 10 / 20 litre

5 litre

10 litre

20 litre



## Fuel canisters for liquid fuels

TÜV-certified, UN / BAM approval - with flexible outlet

### Properties:

- Robust and resistant against impact
- Screw cap is secured against the loss
- Outlet pipe is kept in a canister (pollution and loss can be prevented)
- High stability due the large footprint
- Easy transport due the massive handle.

### Technical datas:

- Material: HDPE
- Colour: red
- Length of Outlet pipe: 200 mm

Article code	Capacity	Height mm	Footprint LxW mm	Weight g	PU pallet
8421.13.12_05	5 litre	237	331 x 185	620	160
8421.13.12_10	10 litre	319	329 x 195	830	100
8421.13.12_20	20 litre	410	385 x 229	1270	60

with flexible outlet





Industriestrasse 5 • 37308 Pfaffschwende  
Germany

Phone +49 (3 60 82) 4 36-0

Fax +49 (3 60 82) 4 36 34

web: [www.killian-caravan-profi.de](http://www.killian-caravan-profi.de)

mail: [contact@comet-pumpen.de](mailto:contact@comet-pumpen.de)



*Byyyyyyeee*